



# STEPHEN F. AUSTIN STATE UNIVERSITY

NACOGDOCHES, TEXAS

Dear Directors,

We are excited to welcome you to Nacogdoches and Stephen F. Austin State University for the UIL Area C 3A Marching Contest on Saturday, October 28, 2023. Please reference the bus and general parking maps attached below this letter to help you with directions to the contest site.

A dedicated crew of SFA students will attend to your needs as efficiently as possible. Many of the stations throughout our facility have workers with radios and they are always able to contact the press box if you need help.

Here are a few more things to know before Saturday:

## **GOLF CARTS, GATORS, ETC.**

No vehicles of any kind are allowed to drive on our track. You will be able to drive on the concrete leading from our tunnel all the way to the Northeast edge of the track, at which point you will need to proceed by foot. There will be a staging area for all front ensembles to assist with getting prepared to take the field. Please be careful not to move after the on-field band starts their performance.

## **FRONT ENSEMBLE AND PROP TRUCKS**

We are working to get the equipment lot cleared as much as possible to allow **vehicles carrying props and front ensemble only** the ability to park and stay in that for the duration of the preliminary performances. You **may not**, at any time, bring other vehicles into this lot or have any other activities going on in this lot (specifically eating/cooking). As this is an active student lot, we cannot guarantee that there will be enough space for all approved vehicles so it is first come, first served. **No large vehicles may drive up to the tunnel or go into the smaller back lot as in previous years.** Only smaller vehicles such as golf carts or gators will be allowed on stadium drive. Please plan accordingly. If need be, there will be additional parking available for these vehicles in the lot off University Dr. (indicated as overflow/equipment truck parking).

## **BUSSES AND INSTRUMENT TRUCKS**

Have your buses and instrument truck(s) pull in the designated entrance (indicated on the map) into the parking area (Commuter Lot) off of University Drive. We will have parking staff there to direct and park all busses and trucks. We will fully park each group before starting with the next which may mean you will have a short wait if you arrive at the same time as another school. All busses and director vehicles will go in one lot, and all other support vehicles will go in another (as indicated on the map).

## **STUDENT RESTROOMS AND CHANGING**

The SFA Coliseum will be open for use throughout the day, but you must have parents and/or directors supervising your students when inside the coliseum. Students must stay in the upper concourse. There will be SFA students stationed on the concourse keeping a time log of every band that enters and exits the facility as well as SFA students monitoring the restrooms in case there is any damage that occurs. UIL Area C has agreed to pay for any damage that students cause during this contest and so we will use the time log and pictures of the damage to assign the damage to a particular school.

## **BAND GUIDES**

Your band guide will meet you in the Commuter Lot 30 minutes before your warm-up time and will be with you through your performance. They will give you timing updates before and during your warm up time. Please note that it takes approximately 5-10 minutes to move from the commuter lot to the warm up areas. Runners can collect any paperwork that you need to give Mr. Bullock from the Commuter Lot worker. These forms must be in the possession of Mr. Bullock before your performance begins.

## **WARM UP AREAS**

The contest will have 3 separate warm-up areas, all located near the entrance to the tunnel. 1 location will be for color guard only, 1 for percussion only, and 1 for the winds. You may choose to combine all of your members in the wind warm-up area but please note that no wheeled instruments/vehicles are allowed in the wind warm-up area so as to prevent damage to the grass and you may not station members on the road near the wind warm-up areas as that would block other bands ingress and egress to the stadium.

Please stress the importance of not disturbing bands that are already warming up. Please be sure all warming up is done facing away from the stadium and ask percussion to play softer than usual, as that particular sound seems to carry into our stadium.

Bands late in the schedule: We will have two light towers to provide some illumination as the sun goes down. We will work to position them in such a way that they provide light to the maximum amount of all 3 warm-up areas.

The warm-up area is a no food and drinks area. Please ask your sponsors/chaperones to help us keep this area clear of trash (there is a dumpster back there). If you would like to give your students water bottles so they stay hydrated, please bring your own trash bags to collect the empty bottles and dispose of in the dumpster.

You will have 45 minutes in the warm-up area if you arrive on time. You are not allowed to begin your warm up early even if your area is unoccupied. Front Ensemble instruments cannot be wheeled onto any grass surface. They may warm up in the percussion warm up area as indicated on the map.

You will go directly to the stadium after your assigned warm-up time. This must be done on time in order to keep the contest on schedule.

## **ANNOUNCEMENTS AND SCRIPTS**

Our announcer will attempt to read your script with clarity. If your script includes any names or words that may be unfamiliar to the announcer, please include phonetic spelling.

## **FIELD EXIT**

After your band performs, they will exit the field into the West stands (home side) continuing through the Southwest gate if returning to busses. This will be the only exit from the field. If the West stands are full later in the day, you may be asked to sit in the East side (visitors side) of the Stadium. All front ensemble must enter and exit through the tunnel only.

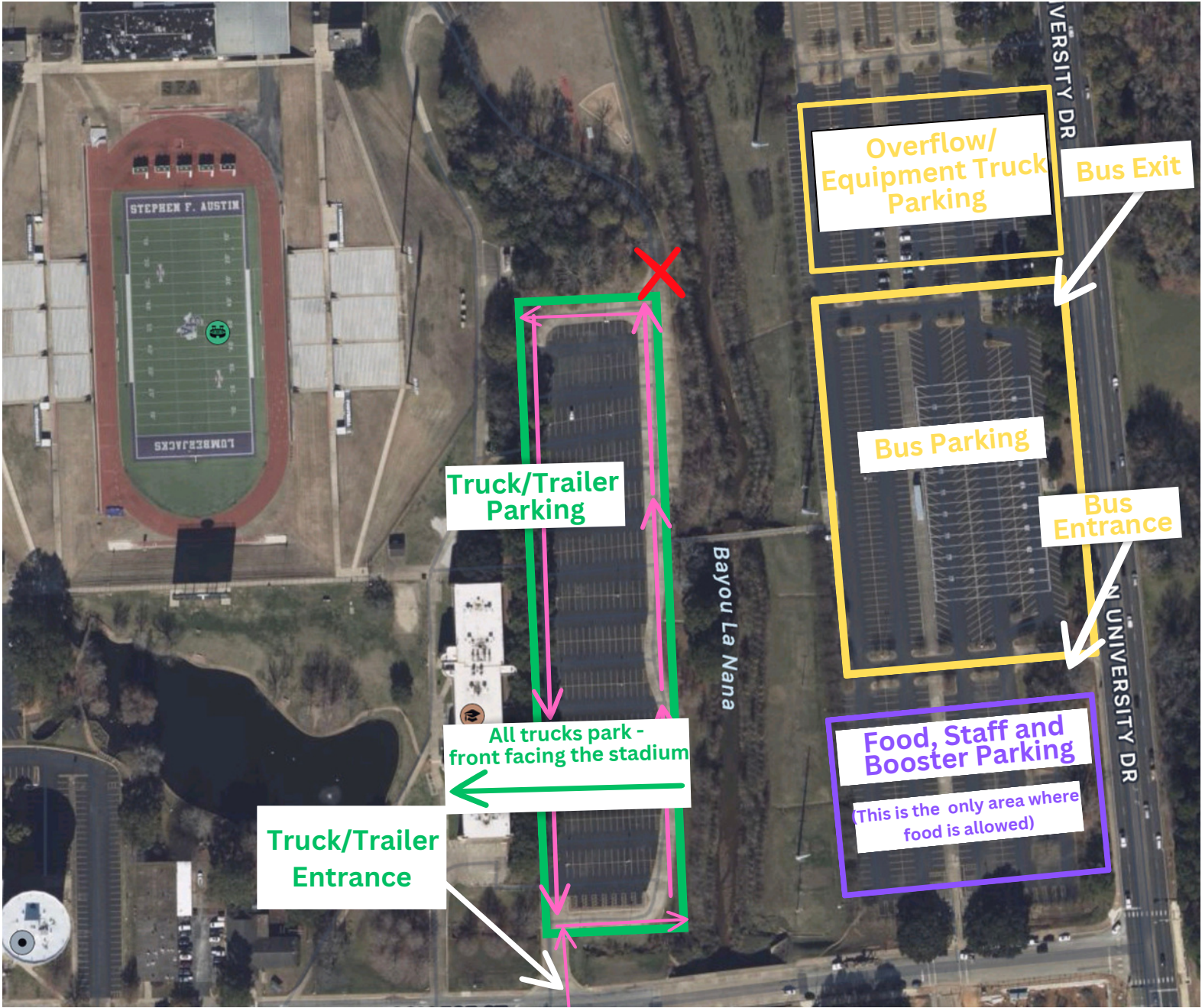
## **FEEDING STUDENTS**

There is a designated area for feeding your students indicated on the attached maps. There should be no eating outside of this area (i.e. by the busses or in the truck/trailer lot). No grilling/barbecuing is allowed due to the smoke traveling to the performance field. Please pass this information on to your boosters, parents, etc.

If you have facility questions, please contact the Band Office at (936) 468-4702 or [bandoffice@sfasu.edu](mailto:bandoffice@sfasu.edu). Please send your procedure questions to Mike Bullock at (903) 258-0832, or [mikebullock@me.com](mailto:mikebullock@me.com).

Thank you,

Dr. Tamey Angley, Director of Bands  
Dr. Dan Haddad, Associate Director of Bands  
Dr. Chris Kaatz, Assistant Director of Bands  
Jessica Martin, Administrative Assistant for SFA Bands  
Mike Bullock, Executive Secretary



Overflow/  
Equipment Truck  
Parking

Bus Exit

Bus Parking

Bus Entrance

Food, Staff and  
Booster Parking  
(This is the only area where  
food is allowed)

Truck/Trailer  
Parking

All trucks park -  
front facing the stadium

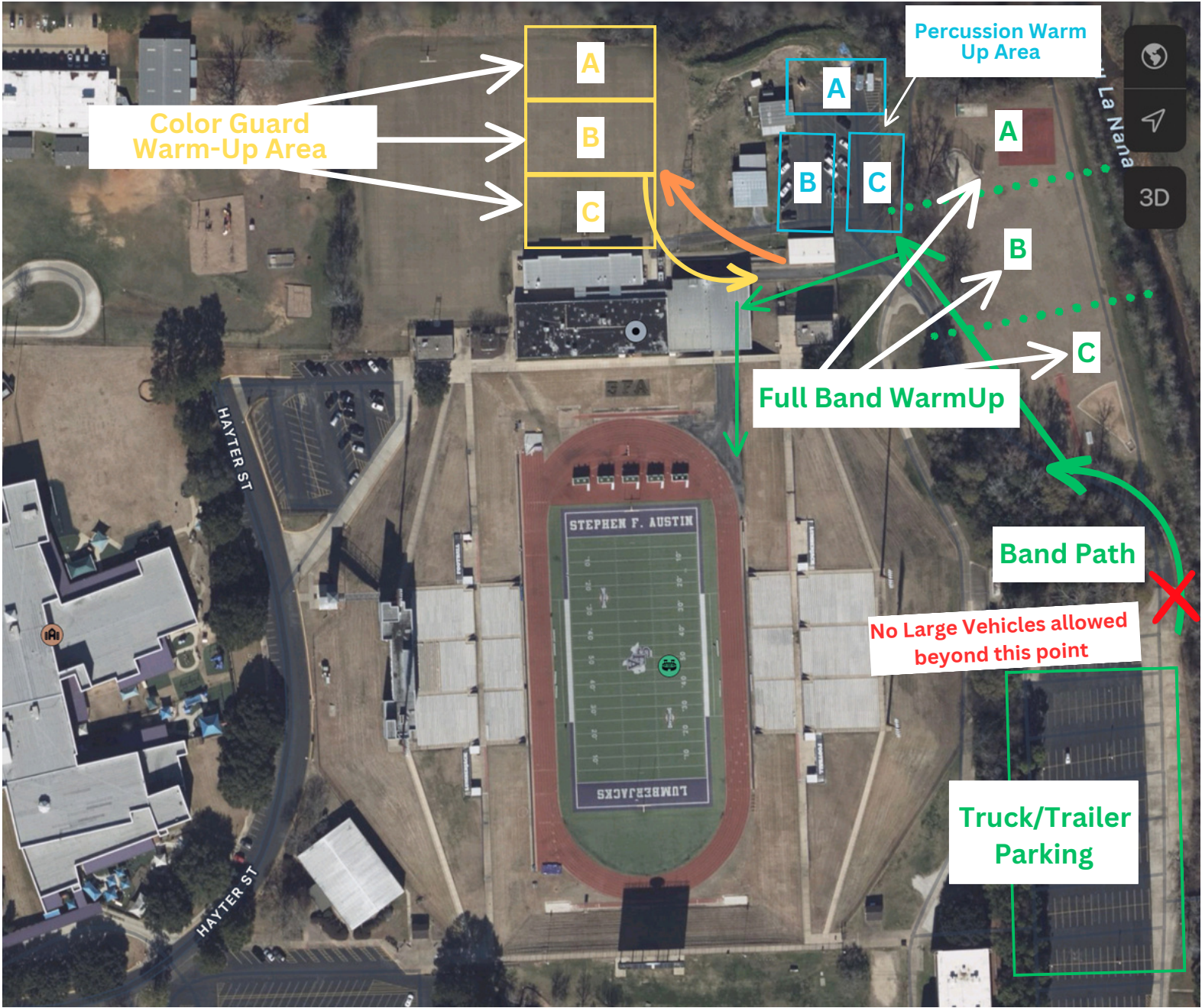
Truck/Trailer  
Entrance

Bayou La Nana

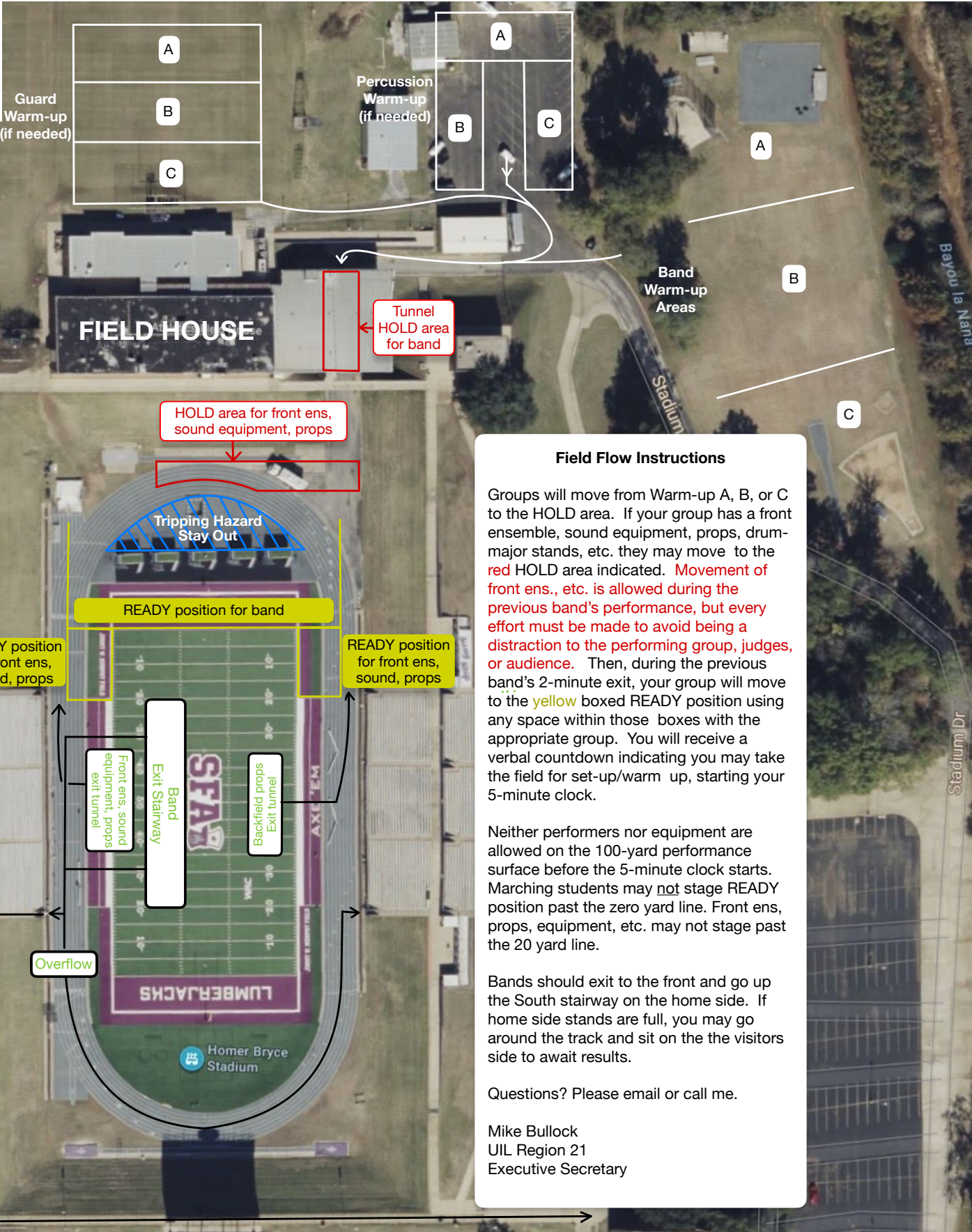
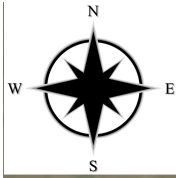
UNIVERSITY DR

N UNIVERSITY DR









### Field Flow Instructions

Groups will move from Warm-up A, B, or C to the HOLD area. If your group has a front ensemble, sound equipment, props, drum-major stands, etc. they may move to the red HOLD area indicated. **Movement of front ens., etc. is allowed during the previous band's performance, but every effort must be made to avoid being a distraction to the performing group, judges, or audience.** Then, during the previous band's 2-minute exit, your group will move to the yellow boxed READY position using any space within those boxes with the appropriate group. You will receive a verbal countdown indicating you may take the field for set-up/warm up, starting your 5-minute clock.

Neither performers nor equipment are allowed on the 100-yard performance surface before the 5-minute clock starts. Marching students may **not** stage READY position past the zero yard line. Front ens, props, equipment, etc. may not stage past the 20 yard line.

Bands should exit to the front and go up the South stairway on the home side. If home side stands are full, you may go around the track and sit on the the visitors side to await results.

Questions? Please email or call me.

Mike Bullock  
UIL Region 21  
Executive Secretary